

The NEON Highway



Mesa's Vintage Roadside Signs



Compiled by
Vic Linoff
Mesa Preservation Foundation
mesapreservationfoundation.org
mesapreservation@gmail.com

©2016

Mesa's Historic Neon Signs West to East

Watson Flowers

2525 West Main

South side



La Mesita (The Skelley's)

2254 West Main

North side



Cibola Mobile Home Park

2249 West Main

South side



Groggy's

2207 West Main

South side



Del Rio Motel

2200 West Main

North side



Pioneer Drive-In Theater (Demolished)

2165 West Main

South side



Village Motel

2130 West Main

North side



Roadrunner Motel

2066 West Main

North side



Tri-City Inn Motel

1504 West Main

North side



Plainsman Motel

1338 West Main

North side



Cloverdale Motel (now Regency)

1302 West Main

North side



Walter's Rock Cabin Motel

1050 West Main

North Side



Hiway Host

1260 West Main

North side



El Morocco Lodge

1226 West Main

North side



Walter's Rock Cabin Motel

1050 West Main Street

North Side

Trava-Leer

936 West Main

North side



El Capitan Lodge

24 North Pew

North side



Darner Motors

837 West Main

South side



MCC / Landmark Restaurant

809 West Main

South side



Kiva Lodge

668 West Main

North side



Feed Bag Western Dining Room (Demolished)

554 West Main

North side



San Jo Motel

524 West Main

North side



Guerrero-Lindsay

525 West Main

South side



Floating Lotus Yoga

202 West Main

North side



Milano's Music

45 West Main

North side



Maricopa Inn Motel (Demolished)

3 East Main

South side



Winter Garden Motel

131 East Main

South side



Sun Valley Motel (Demolished)

144 East Main

North side



Marquee Drive-In (Closed)

216 East Main

North side



Dairy Queen

603 East Main

South side



Mil-Mar-Dor Motel

659 East Main

South side

El Rancho

719 East Main

South side



(Mag's) Ham Bone

903 East Main

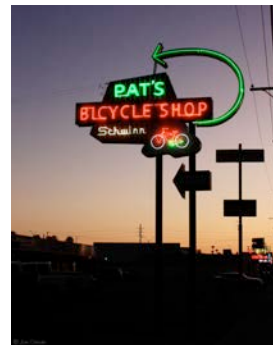
South side



Pat's Bicycle Shop (Closed)

929 East Main

South side



Matta's Restaurant

932 East Main

North side



Bill Johnson's

950 East Main

North side



Citrus Paradise Motel

1045 East Main Street

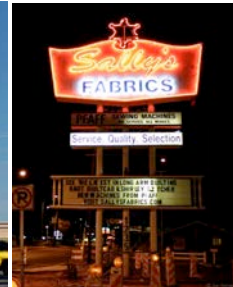
South side



Plantation House /Sir George's Smorgasbord / Sally's Fabrics

1235 East Main

South side



Frontier

1307 East Main

South side



Professional Playground Installers

1548 East Main

North side

Apache Motel & Apartments

1859 East Main

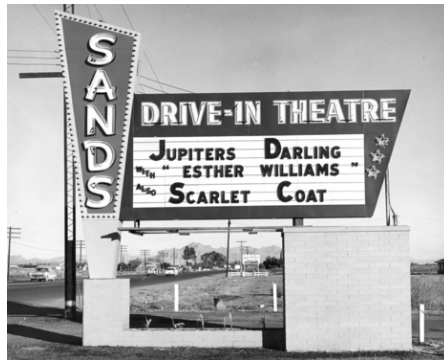
South side



Sands Drive-in Theatre (demolished)

2245 East Main

South side



Deserama Mobile Ranch

2434 East Main

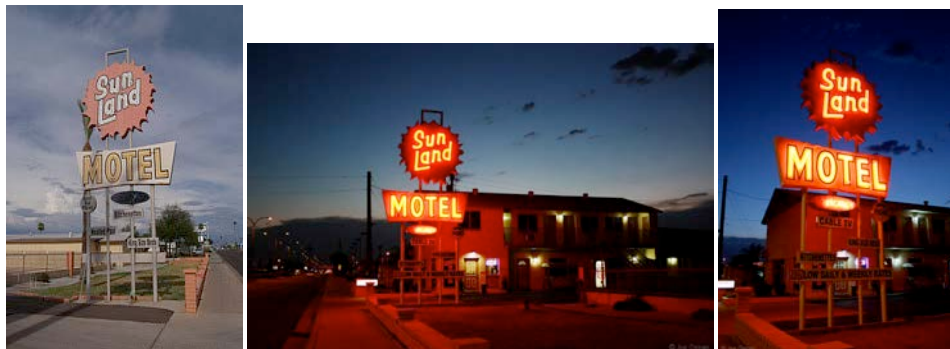
North side



Sunland

2602 East Main

North side



Starlite

2906 East Main

North side



Hi Jolly Date Gardens

4500 East Main

North side



X-B Trailer Ranch

5200 East Main

North side



Centebar Motel

5402 East Main

North side



Westernaire

5414 East Main

North side



Velda Rose Motel

**5700 East Main
Dave Morgan's Velda Rose Mineral Baths**

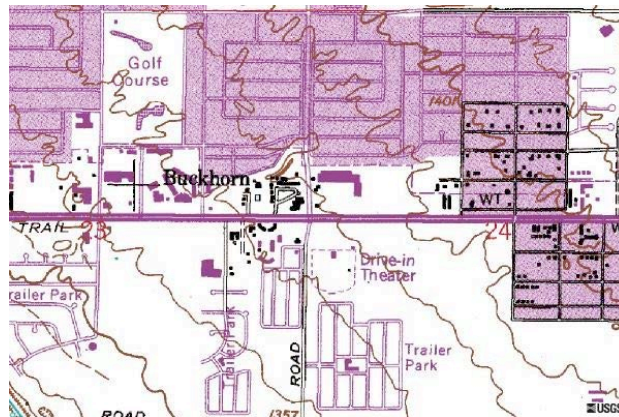
North side



Velda Rose Drive-In (Demolished)

103 South Recker Rd

SW side



Desert Baths

7 miles east of Mesa



Buckhorn Baths

5900 East Watson

South side



Neon signs on Main Street

Take a self-guided road trip to view the enduring historical neon signs in Mesa. In the mid-20th century, these neon signs lit up the main drag in Mesa to guide people to the motor courts along the road. Neon also was used to attract people to shops and restaurants. This chunk of history has endured on Main Street.

